

ACCREDITED BY:



NALLA NARASIMHA REDDY EDUCATION SOCIETY'S GROUP OF INSTITUTIONS

ENGINEERING | PHARMACY | MBA

EAMCET, ICET, PGCET & ECET CODE: **NNRG**

ACCREDITED BY:



TRANSFORM **YOURSELF**, TRANSFORM **THE WORLD!**

A DECADE OF **DEDICATION**



Ever since its inception in 2009, at NNRG, we left no stone unturned in nurturing engineering excellence in our students. For around a decade, our students brought laurels to the institution with a successful track record of securing the best jobs from prestigious Companies across the globe. It is our strong belief that only a well taught student equipped with unique skill set will shine in a global perspective.

At NNRG, a committed academic faculty with excellent infrastructure and resources transform students into valuable human resources. Through various academic programs, NNRG inculcates knowledge, discipline and values among students enabling them to explore and realize their highest potential.

NNRG's Integrated Campus is scaling new heights of eminence through innovative curriculum imparting methodology, academic discipline and holistic education. We constantly focus on improving the quality of facilities and give the best possible education to our students which facilitates them to evolve as qualitative global citizens.

Best Regards

Shri Nalla Narasimha Reddy

Chairman - NNRG

Hyderabad

VISION

To be a premier institution ensuring globally competent and ethically strong professionals.

MISSION

- To provide higher education by refining the traditional methods of teaching to make globally competent professionals
- To impart quality education by providing the state-of-the-art infrastructure and innovative research facilities
- To practice and promote high standards of professional ethics, transparency and accountability



PAVING A PATH FOR **PROGRESSIVE FUTURE**

The three schools - The School of Engineering, The School of Pharmacy and The School of Management Sciences, headed by Deans under Director's supervision, constitute this Centre of Learning.





EDUCATION DESTINATION, AT AN EASY TO REACH **LOCATION**

NNRG's integrated campus is located at about 17 Kms from Secunderabad & Koti, 10 Kms from Uppal Ring Road, on Warangal Highway. Easy access through any public transport system and just 15 minutes of travel from Uppal make it easy to commute to the campus. Frequency of RTC buses from various places is also an advantage. The Institute provides college buses in various routes for faculty, staff and students. Free transport facility is provided to all students from Narapally 'X' Road to the campus.

Uppal Bus Depot - 7 Kms

Ghatkesar - 8 Kms

Secunderabad Railway Station - 17 Kms



THE INTEGRATED CAMPUS WITH **THREE CONSTITUENT SCHOOLS**

THE SCHOOL OF ENGINEERING

UG: B.Tech

Computer Science & Engineering
Electronics & Communications Engineering
Electrical & Electronics Engineering
Mechanical Engineering
Civil Engineering

PG: M.Tech

Computer Science & Engineering
VLSI & Embedded Systems
Machine Design

THE SCHOOL OF PHARMACY

UG: Pharmacy

B. Pharmacy

PG: M.Pharmacy

Pharmaceutics
Pharmaceutical Analysis

THE SCHOOL OF MANAGEMENT SCIENCES

PG

M.B.A.

Institution is accredited by NAAC

B.Tech. - CSE, ECE & MECH are accredited by NBA



The cardinal principles of hard work, values and discipline are the driving forces which propel the work force at NNRG in nurturing the young minds for academic and overall excellence.

AN INFRASTRUCTURE **THAT ENABLES A HOLISTIC GROWTH**

Entrepreneurship Development Cell

Industry-Institute Interaction Cell

Center for Human Excellence





SALIENT FEATURES

- Picturesque 12 Acre Campus
- 3,00,000 sft built-up Spaces
- Well Qualified and Experienced faculty
- State-of-the-art Laboratories
- High level safety standards at Laboratories
- Advanced English Communication Skills Laboratories
- Department-wise Seminar Halls
- 800 LAN connected High configuration Computers
- Internet with 100 Mbps bandwidth
- Well stacked spacious Library
- Digital Library
- Research & Development Centres
- Training and Placement Cell
- Industry-Institute Interaction Cell
- Center for Human Excellence
- Entrepreneurship Development Cell
- CPCSEA approved animal house
- Incubation Centre
- Robotics Centre
- Professional Societies & Clubs
- WiFi enabled Campus
- Sports & Games
- NCC & NSS Units
- Cafeteria
- Girls Hostel
- Dispensary





LEARNING ENVIRONMENT WITH THE **FINEST FACULTY**

NNRG takes pride in choosing competent faculty members who are well versed in their subjects and are experienced in respective disciplines. Research experience, Ph.Ds are the yardsticks with which we ascertain and ensure that their value addition to the institution plays a game changing role in moulding the careers of young and talented individuals. It is the ideal platform where the aspirations are realized and new history is created.

HANDS ON LEARNING AT **LABS**

A hub for knowledge seekers, NNRG campus provides the required ambience to augment the growth of its students with excellent infrastructure, faculty, all round activities and events. With vast green grounds, state-of-the-art laboratories, NNRG fuels the penchant among the students to pursue their passion with zeal and also allows them to grow holistically in all different spheres pertaining to life.



EXCELLENCE CENTRES

An upgrade to catch up with the changing times:

07 Research Centers

120 Active Researchers

1500 Research Publications

INCUBATION CENTER

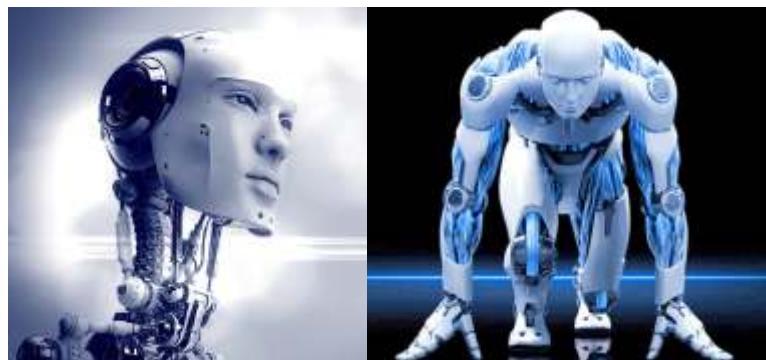
Incubation Center is an educational project which provides specially designed incubators for colleges within their own premises. Once a student registers for the course, Collab ensures an overall development of the student ranging from technical training to personality development which maximizes the chances for the students to achieve the best in the competitive job market.

ROBOTICS DEVELOPMENT CENTER

- Robotics center provides students a practical application of technology and learning from their curriculum by participating in interestingly designed problem solving tasks.

MAJOR RESEARCH FACILITIES

- Cadence Tools
- DSP development boards on floating point TMS320C6713
- MATLAB
- ProE and ANSYS software tools
- CNC Milling Machine
- IOT Labs
- 3D Printing



HIGHLY EQUIPPED **LIBRARY**

The central library has state-of-the-art facilities with books both in print and digital formats. Spread in an area of 1500 Sq. mts, the library has separate lending, reading, periodical and digital library sections. The fully computerized library with Online public access catalogue system, contains over 35,000 volumes covering about 5000 titles. Apart from text books, it has a large number of reference books, national and international journals, magazines and e-journals.

Through OPAC system, these can be accessed through intranet. The digital library is equipped with 32 latest systems and provides 10 Mbps internet connection exclusively.





LIBRARY FEATURES

- Books lending facility for students and staff.
- Library has subscription to 228 International and National print journals and around 600 online e-journals through DELNET, IEEE, ASME and Sage Publications.
- The Reference section is a spacious enclave containing books on GATE, TOEFL, GRE, GPAT, General Studies, encyclopedias, dictionaries, handbooks, thesis and prescribed text books.
- Digital library has 32 latest version systems connected through LAN and internet with 10 Mbps bandwidth. It has a complete collection of NPTEL video lectures of IIT experts.
- Print and replication related stationery assistance is made available.

COLLECTIONS

Books - 35000

CD/DVD's - 500

Projects Reports - 1500

Print Journals - 228

E-Journals - **More than 600**

E-Books - **More than 200**

Well-stacked, spacious library with thousands of volumes & National and International Journals

COMPUTER SCIENCE & ENGINEERING

ACCREDITED BY NBA

The Department has highly qualified and experienced faculty in the field of Computer Science and Engineering. The four year B.Tech program builds strong foundations in all traditional areas of Computer Science and Engineering.

The Department uses best approach and methodology to impart innovative spirit amongst the students. They are trained in software and hardware through co-curricular and extra-curricular activities. "Tech Samprathi" is an in-house association of students and faculty to conduct various events to enhance academic and technical skills in students.

The Department lays great emphasis on hands-on training and design as part of course projects. The Department teaches the students to access and solve multi-disciplinary problems with a focus on total system. CSE students are exposed to the principles that are critical to the design, development of software, hardware and networking of computer systems.

The course is designed to provide students with the fundamentals of computer science, both hardware and software, the application of engineering concepts and techniques.

THE LABORATORIES

The most sought after Department, has excellent laboratories and infrastructure. It has seven computer labs with more than 800 high end systems with authorized software recommended by JNTUH. The undergraduate and postgraduate students are empowered to practice all the lab sessions in LINUX environment. The Department has five computer centers for undergraduate students, one exclusive center for P.G. students and one elite center for Research and Development. All the computers in computer centers are connected via LAN. The Department is associated with professional bodies like IEEE, CSI and ISTE.



CSE Labs

- C Programming Lab
- IT Workshop
- Data Structures Lab
- Java Programming Lab
- Database Management System Lab
- Operating Systems Lab
- Software Engineering Lab
- Web Technologies Lab
- Computer Networks & Cryptography Lab
- Network Security Lab
- Design and Analysis of Algorithms Lab
- Linux Programming Lab
- Data Warehousing & Mining Lab
- Advanced Data Structures & Algorithms Lab
- Software Testing Lab
- Web Services Lab



ELECTRONICS & COMMUNICATION ENGINEERING

ACCREDITED BY NBA

The Department is a full-fledged entity for emerging ECE engineers. The Department is committed to provide the students an opportunity to embark on a rewarding and exciting professional journey at NNRG. The Department has spacious laboratories with the latest equipment. Seminars, Workshops and Technical Symposia are being frequently conducted to keep faculty and students updated.

The Department is making exciting progress in areas ranging from microelectronics, mobile communications to VLSI Design Automation. The students draw on expertise and knowledge of a distinguished faculty, integrating practical learning with challenging course-work.

The Department has a rich tradition in teaching and research. The students engage in various facets of learning like:

Research activity in the Department

Seminars included in the curriculum to develop communication and interpersonal skills

Various club activities organized by the Department to train the students for the industry through technical projects, competitions etc

Workshops & conferences held at the Department and Institution level to provide them relevant exposure

Students are trained for placements and to pursue higher studies in prestigious institutions in India and abroad.

Software & major equipment in the Department:

- Cadence EDA Tool
- MATLAB-2014b and Tool boxes
- Spectrum Analyzer and Signal Generator
- Digital Signal Processors Kits (TMS 320C6713)
- Advanced RISC machine processor kits (LPC2148)
- Xilinx SPARTAN 3E FPGA Boards

MECHANICAL ENGINEERING

ACCREDITED BY NBA

ECE Labs

- Electronic Devices & Circuits Lab
- Basic Simulation Lab
- Electronic Circuits & Pulse Circuits Lab
- IC Applications & HDL Simulation Lab
- Analog Communications Lab
- Microwave Engineering & Digital Communications Lab
- Digital Signal Processing Lab
- Microprocessors & Micro controllers Lab
- E-CAD & VLSI Lab
- Embedded Systems Lab



The Department offers excellent teaching and practical education to students. The faculty has expertise in all mechanical engineering specializations to impart exceptional classroom coaching. The Department boasts of state-of-the-art laboratories with advanced equipment. It focuses on providing practical training as numerous industries are located nearby campus. The Department moulds the students according to the industry needs.

Mechanical Engineering Department at NNRG has an edge because of :

- Well equipped laboratories with the latest machines
- Highly qualified faculty
- R&D activity
- Industry connect and collaboration
- The students undergo internships in various industries
- Innovative teaching methodologies using ICT.
- Regular industrial visits
- Guest lectures by eminent persons from both academia and industry
- The Department hosts various workshops in latest technologies

Mechanical Engineering Labs and Workshops

The Mechanical Engineering laboratories are well equipped to demonstrate the functioning of various machines and their mechanisms. CAD/CAM laboratory encourages the students to implement different concepts. The laboratory has design software, viz., Pro-E, AutoCAD and Simulation software, namely ANSYS. These softwares are used for research and academic projects - which are indispensable for the mechanical engineering students.



The Department takes pride in an exclusive CNC machine, highly useful for research work

- Engineering Workshop
- Mechanics of Fluids & Hydraulic Machines Lab
- Heat Transfer Lab
- Instrumentation & Control Systems Lab
- Machine Tools Lab
- Mechanics of Solids Lab
- Metallurgy & Material Science Lab
- Metrology Lab
- Production Technology Lab
- Thermal Engineering Lab
- CAD/CAM Lab
- Kinematics & Dynamic Lab

ELECTRICAL & ELECTRONICS ENGINEERING

The Department is led by a highly competent and experienced faculty with sound research exposure. Enrich, Enlighten and Escalate (EEE) are the principles of the Department. The Department has well established laboratories with sophisticated equipment complementing the academic needs.

Students are regularly exposed to the latest trends through industrial visits, guest lectures, conferences and workshops. Additional experiments are undertaken along with those prescribed in JNTUH syllabus, to give the students a strong grasp of the subject. R&D activities of the Department are fully funded by the Management. The placement record of the EEE students is always exemplary year after year.

The Department promotes excellence in teaching, training and research to create highly competent electrical engineers in ever-changing field of Electrical and Electronics Engineering. The experienced faculty is attentive to individual students to give the required career orientation. The Department, in tune with institute's objectives focuses on student discipline, and takes active interest in student counselling.

The up-to-date labs provide opportunities to work on different hardware and software platforms used in industry, with the objective of staying relevant to industries' needs. The undergraduate program at NNRG goes beyond the curriculum prescribed by JNTU-Hyderabad.

EEE Labs

- Electrical Circuits & Simulation Lab
- Electrical Measurements Lab
- Electrical Machines Lab
- Power Electronics & Simulation Lab
- Control Systems & Simulation Lab

CIVIL ENGINEERING

The Department deals with the design, construction and maintenance of the physical and naturally built environment including roads, bridges, canals, dams and buildings.

The Department deals with areas of Structural Engineering, Water Resource Engineering, Geotechnical Engineering, Transportation Engineering and Engineering Geology.

The Department has well equipped laboratories in Strength of Materials, Hydraulic and Fluid Mechanics, Geotechnical Engineering, Concrete & Highway Engineering, Environmental Engineering, Engineering Geology and Surveying. The Department organizes guest lectures by eminent academicians from various, organizations and universities.

The Department library contains relevant text books, reference books, code books and journals which help the students in research activities. Placement opportunities are made available in reputed companies. Students are provided with necessary training in aptitude, reasoning and communication skills.

Civil Engineering Labs

- Civil Engineering Labs
- Computer Aided Drafting of Buildings(CAD) Lab
- Concrete & Highways Materials Lab
- Engineering Geology Lab
- Environmental Engineering Lab
- Geotechnical Engineering Lab
- Surveying Lab



COMPUTER SCIENCE & ENGINEERING

CSE M.Tech program aims at preparing the students to take up application, research and development activities in core and new emerging areas in the domain of Computer Sciences. The program includes advanced level courses in Computer Algorithms, Data Bases, Distributed Computing and Cloud Computing. The 2-year program provides a strong basis in Computer Science for those who aspire to opt for a serious career in CSE based industries and academia.

The purpose of the program is to generate human resources capable of supporting R&D activities in critical areas like automated, secured monitoring and surveillance systems, medical diagnostics, intelligent monitoring systems etc.

Advanced Data structures and Algorithms lab and Internet Tech Labs are established exclusively for MTech program.



VLSI & EMBEDDED SYSTEMS



The aim of the VLSI Design & Embedded Systems program is to address research, development and design issues and advance their solutions in VLSI circuits for embedded system and ubiquitous computing applications.

The program focusses on front and back-end design of VLSI Analog and Digital circuits.

- Advanced Embedded Systems and VLSI labs are exclusively provided for PG program
- Cadence tools and FPGA/CPLD hardware kits

MACHINE DESIGN

Machine Design involves the analysis of static and dynamic forces in designing machine elements to meet strength, safety, reliability and cost factors. The M.Tech program focuses on design of mechanisms and components using analytical, numerical and experimental approaches.

This program focuses on Theory of Elasticity and Plasticity, Advanced Vibrations, Tribology and Bearing Design, Fracture mechanics, Experimental Stress Analysis, Composite Materials and Technology and Finite Element Analysis.

The Department lab has high configuration computation facility with systems and softwares like PRO E and ANSYS.



B. PHARMACY

The School of Pharmacy provides high quality education to undergraduate and post-graduate students. The School has well established infrastructure and facilities to ensure a real time, hands-on experience for the students. We impart pharmaceutical skills by resorting to highly focused, in-depth and adaptive teaching methodologies. A wealth of skilled teaching staff and sophisticated equipment have led to the overwhelming success of the program catering to Pharmaceutical Industry. A wide range of amenities, laboratories, research activity distinguish the School of Pharmacy among the peers.

Life at School of Pharmacy is both exciting and rewarding. We secure a bright future for the students enabling them to build their careers. We emphasize on development of skills, by organizing numerous workshops, seminars, training sessions, etc. The School provides dedicated teaching and focuses on training students in communication skills, soft skills, to do better in campus placements. As a result, the School of Pharmacy maintains 100% placement record every academic year. We also conduct career guidance programs like GPAT, GRE, NIPER-JEE etc.

The students participate in extra curricular activities to stay active. The spacious premises with greenery encourages students to take part in games and sports in a serene environment.

Pharmacy Labs

- Pharmaceutics Lab
- Pharmacology Lab
- Pharmaceutical Chemistry Lab
- Pharmaceutical Analysis Lab
- Pharmacognosy Lab
- Animal House (CPCSEA Approved)
- Medicinal Plant Garden
- Central Instrumentation Center
- Pharmaceutical Manufacturing Lab



One Course - Many Avenues

The Pharmacy graduates and Post graduates are pampered with the choicest employment avenues. To name a few:

- Industrial Pharmacist
- Teaching
- Pharmacist
- Quality Assurance Health Manager
- Medical Transcription
- Analytical Chemist
- Nutritionist & Dietician
- Sales and Marketing
- Clinical Research
- Data Manager
- Regulatory Manager
- Career in Regulatory bodies
- Bioinformatics
- Para Medical

M. PHARMACY

NNRG offers two PG programs in Pharmacy

- M.Pharm in Pharmaceutics
- M.Pharm in Pharmaceutical Analysis

Pharmaceutics

M.Pharm students study about bioavailability, bioequivalence, pharmacokinetic parameters, non-linear and time dependent pharmacokinetics. Formulation development of novel drug delivery systems and their in vitro and in vivo evaluation. They learn about the compression and consolidation parameters for powders and granules. They also know the design evaluation and application related to oral, parenteral, transdermal, implants, bioadhesives and targeted drug delivery systems. The students will know the fabrication, design, evaluation and application of above drug delivery systems at laboratory level.

Pharmaceutical Analysis

The course is designed for Pharmaceutical Analysis. Modern analytical techniques like UV-Visible, IR, NMR, Mass, GC, HPLC, different chromatographic methods are taught to understand the determination of different bulk drugs and their formulation. The basic practical knowledge relevant to the analysis is also taught.

Research Facilities

- Rota Flash Evaporator
- HPLC
- UV spectro photometer
- 16-station compression machine
- CPCSEA Approved Animal House



MASTER OF BUSINESS ADMINISTRATION

The School of Management Sciences offers MBA course with specialization in Financial Management, Human Resource Management and Marketing Management. The students engage their minds with a distinguished faculty to develop analytical skills - a critical aspect in understanding management principles.

Proactive Approach

Pursuing MBA at NNRG is an academic feast. It helps the students explore their potential and strengthen their skills. They are guided not only to study leadership, but to demonstrate it. Each day at NNRG begins with the question: "What do I want to do?" and the answer brings them closer to their goal to understand, "What difference will they make in the world?"

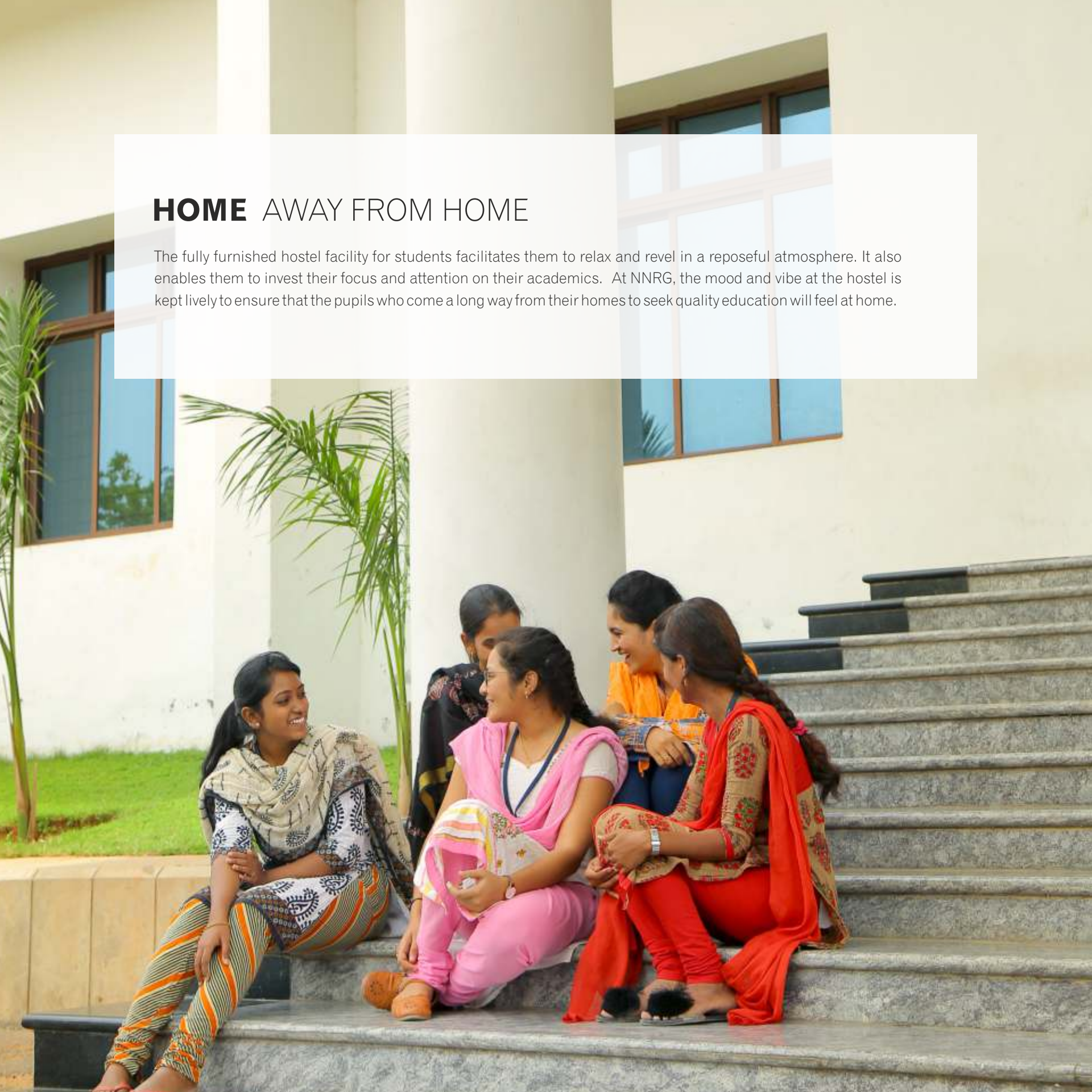
Business Club activities

- Group Discussions
- Personal Effectiveness
- Just a minute
- Case Studies
- Seminars & Power Point Presentations
- Role plays
- Management Games
- Industrial Visits
- Guest Lectures & Workshops
- Subject Viva Voce
- Mini Projects
- E- Learning
- Aptitude Classes
- Mock Interviews
- Effective Communication Classes
- Personality Development Classes
- Poster Presentation
- Business Quiz
- New Product launch



HOME AWAY FROM HOME

The fully furnished hostel facility for students facilitates them to relax and revel in a reposeful atmosphere. It also enables them to invest their focus and attention on their academics. At NNRG, the mood and vibe at the hostel is kept lively to ensure that the pupils who come a long way from their homes to seek quality education will feel at home.





CAFETERIA

The campus canteen is a large and vibrant area, with a beautiful view of greenery all around. Clean surroundings, hygiene and nutritional aspect of refreshments and meals are maintained by the canteen In-charge. The canteen tends to be the most popular place on campus, not only for food but also for student bonding, informal discussions and even work on assignments and projects.

SPORTS & GAMES

NNRG endeavours to foster overall development of students both in academic and sports fields. NNRG has extensive sports infrastructure and environment to encourage students to excel in them. The students are given coaching to improve physical fitness, mental ability, team spirit and the discipline. NNRG has indoor sports and outdoor fields for athletics, cricket, badminton, basketball courts which ensure that the students are maintaining healthy standards both in body and mind.





LINKAGE WITH **INDUSTRY**

NNRG has signed MOUs with various organisations and industries to train the students, to upgrade the technical skills, aptitude and overall personality development. This also helps the students to undergo internships, project works and get hands-on experience.

MOUs

SCHOOL OF ENGINEERING

Oracle Academy
Vmware
Vedic Systems
C! Smartconnect Technologies
Digital Lync
Smart Infe-Est
Ram Tech
EAIESB
Medha
Axiom Energy Solutions
Udai Engineering Works
SR CNC Technology
DEFW Automations
GPR Electrical & Automation
H-Bots
Siliconus

SCHOOL OF PHARMACY

Pro Generics
Scoat Pharma
Nishka Research Pvt.Ltd.
Glukem Pharmaceuticals

Industrial Visits

Analogics Tech India Limited
NATCO Pharma Pvt Ltd
Dr. Reddys Laboratories
GVK Bio
Hetero Drugs
400 KV Sub Station
Straton
Servomax India Pvt. Ltd
RK Industries
CPRI
BHEL
Sai Deepa Rock Drills
Jain Irrigation Systems Ltd
Hitex International Machine Tools Expo
APSRTC Workshop
JIA MSME EXPO
G+5 residential building of MH Associates
Industrial/Institutional visit at Geological Survey of India(GSI)
TNR Constructions P Ltd
Agricultural Climate Research Station (ACRS)



NNRG has an independent Training & Placement Cell, committed to provide all possible assistance to its students. It is headed by an experienced and qualified Training & Placement Officer.

Path Breaking Achievements of T&P Cell @ NNRG:

- The Cell ensures that maximum number of students secure placements in reputed National & Multinational Companies.
- Extensive placement training from 1st year onwards on Aptitude, Verbal, Coding & Soft Skills.
- Unbeatable reputation for On-campus placements by sheer virtue of intensive focus on making students industry ready.
- More than 50 top-notch companies across the globe from all sectors visit the campus for recruitment. Every year more than 90% of students from all the programs are being placed.
- Star Status received from TASK, Govt. of Telangana.
- Presence of NNRG Alumni to be found in companies across the world.



SEASONED VETERANS

“
The success of any Professional College is measured by the employability of its outgoing students. NNRG is proud to claim that our students have a great choice in employment as they are preferred by leading industries.
”

FEEDBACK

At NNRG, the right kind of exposure and training made it easy to recruit the best in for my organization - **Mr. Vijaya Raghavan Krishna Murthy, INFOSYS.**

I would like to thank NNRG Institution and the Training and Placements team for their hard work and esteemed guidance which helped us in making our work easier to recruit the students - **Ms Padmaja, IBM.**

I found your co-operation excellent towards the recruitment process. We found a very good set of students. I, along with our team is looking forward for next year as well. - **Ms Roopa, Pramati Technologies.**

Your co-operation towards the recruitment process despite technical issues from our end is really appreciable. Thanks for planning and getting this done in time - **Mr Chandra Shekar, Tech Mahindra.**

NNRG is much an expression of doing the things innovatively. This college is one of the best combinations of state of art facilities in education and co-curricular activities - **Ms Spandana HETERO.**



SOME OF OUR RECRUITERS



NATIONAL & INTERNATIONAL CONFERENCES & SEMINARS

Glimpses of Conferences



Department of Computer Science & Engineering



Department of Civil Engineering



Department of Mech. Engineering



Department of Electronics & Communication Engineering



Department of EEE



School of Management Sciences



School of Pharmacy



WORKSHOPS AND **MASTER CLASSES**

Each Department at NNRG's integrated campus conducts Technical workshops frequently in the concerned areas to provide hands-on experience to the students. These workshops are organized in collaboration with industries so as to help the students keep themselves abreast with the technological innovations and advancements. Some of the areas on which workshops have been organized in the recent past are:

SCHOOL OF ENGINEERING

CSE

Ethical Hacking
Workshop on -PHP
Internet of Thing (Internet of Things)
Android applications
Machine Learning

ECE

PCB Design & Fabrication
Implementation of Pspice Simulation using MATLAB
Hands on Training using Lab View
Analog & Digital system design using cadence EDA tool
8051 microcontroller and its applications
Simulation using Proteus & Keil μ Vision

EEE

Illumination system design using DIALUX software
Home Automation for Electrical Appliances
Control Systems & Data Acquisition - Lab View
MATLAB applications in Electrical Engineering

CIVIL ENGINEERING

Analysis & Design of Structures using STAAD.Pro
Participatory Water/ Irrigation Management
Structural Engineering Concepts & Software
Planning & Drawing of building components
Judicious use of Water Resources workshop
Total Station & differential GPS

MECHANICAL ENGINEERING

Robotics
CNC Programming
3D Printing
Computer Aided Design & Drafting by Autocad
Computer aided Engineering by ANSYS Software

SCHOOL OF PHARMACY

Pharmacological screening
Formulation development & evaluation
New drug discovery & development

National Level Students Technical Symposia

- Tech Samprathi
- Pharma Samprathi
- Parampara

SCHOOL OF ENGINEERING **Tech Samprathi**



SCHOOL OF MANAGEMENT & SCIENCE **Parampara**



SCHOOL OF PHARMACY **Pharma Samprathi**



Decennial Celebrations 2019

NNRESGI celebrated the two-day Decennial Celebrations on 8th & 9th March 2019. The Events brought academicians, students, faculties and activities together to make it a memorable one.

The Chief Guest Shri Etela Rajender Garu, Honorable Minister for Medical Health & Family Welfare spoke on the importance of the health of academic institutions as the nation building and congratulated the College Management on the rapid progress in the very short duration.

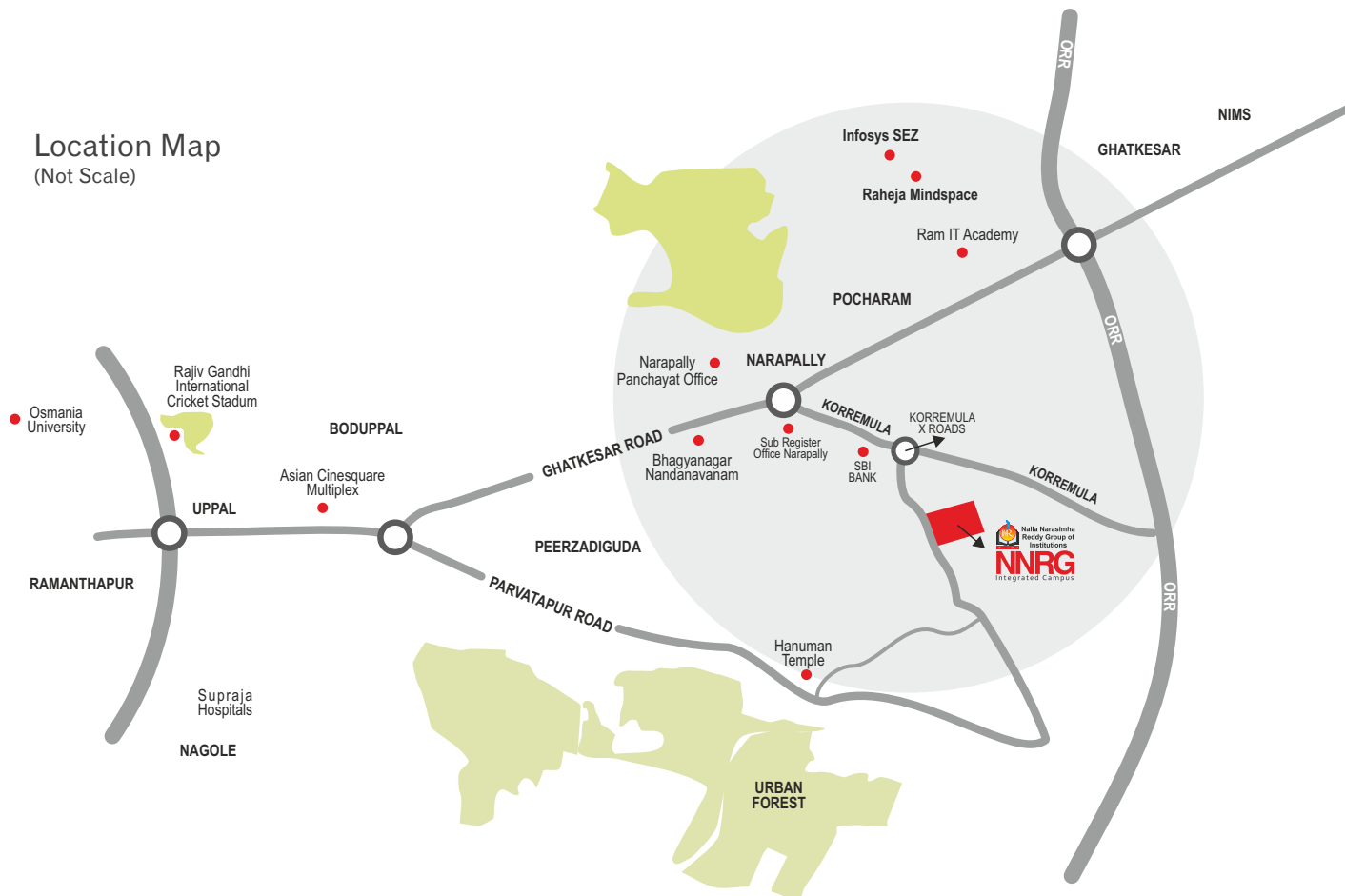
The Guests of Honour Professor Thummala Papi Reddy, Chairman Telangana State Council of Higher Education. Professor A. Venu Gopal Reddy, Vice Chancellor of JNTUH and Professor N.V. Ramana Rao, Director - NIT Warangal appreciated Institute's management, Training & Placement Cell, faculty, staff and students.





MANY PATHS - ONE DESTINATION

Location Map
(Not Scale)



NALLA NARASIMHA REDDY
Education Society's Group of Institutions - Integrated Campus.
(Approved by AICTE, PCI, New Delhi. Affiliated To JNTU - Hyderabad)

Near Narapally, Chowdariguda(Vill.), Korremula 'X' Road, Ghatkesar (M)
Medchal - Malkajgiri (Dist.), Hyderabad - 500 088, Telangana

EAMCET, ICET, PGCET
& ECET CODE: **NNRG**

Cell: **+91 99853 11103**
99853 11107

Landline: **040 2970 5282**

www.nnrg.edu.in